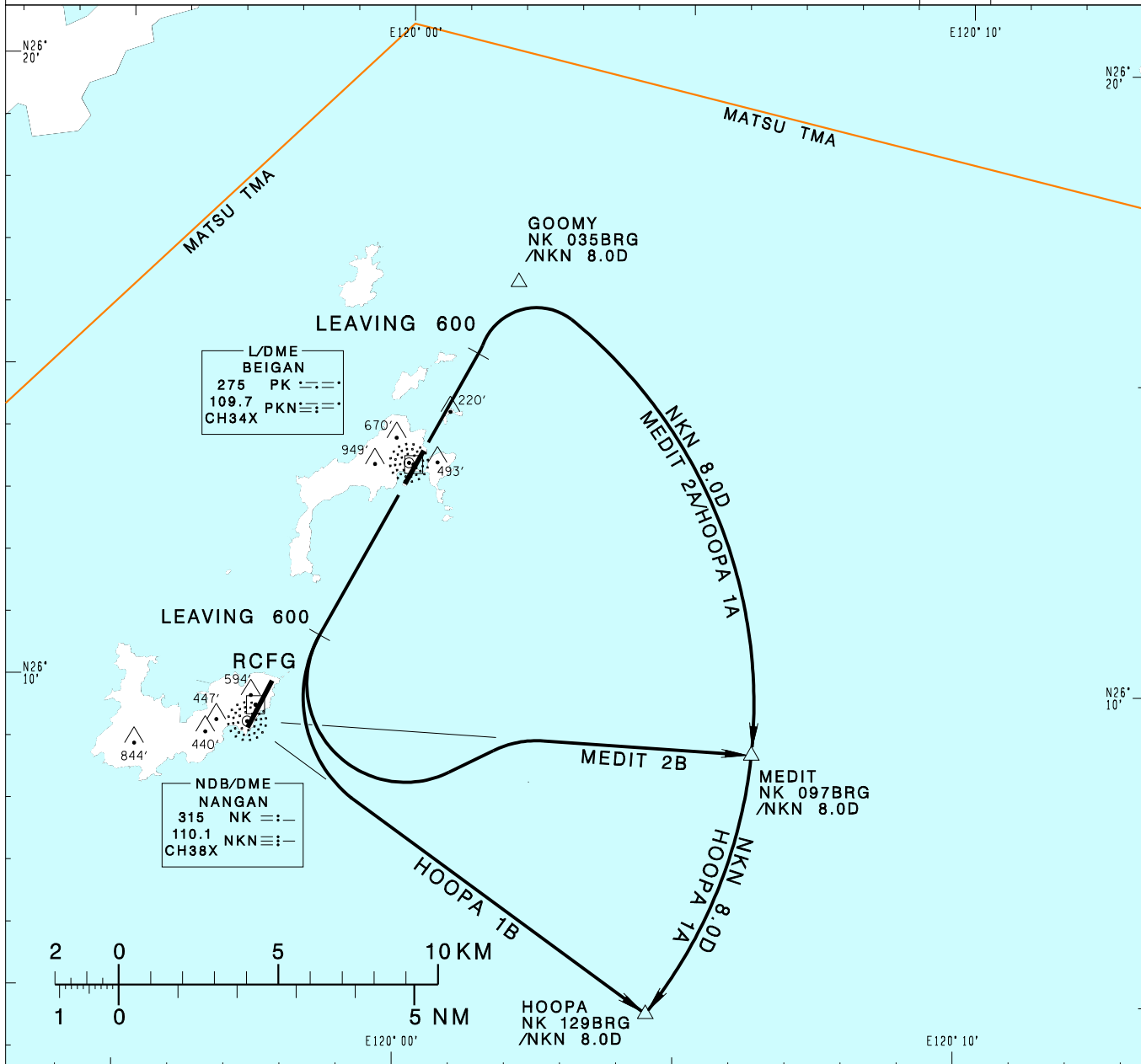


**馬祖/北竿機場**  
MATSU/BEIGAN AD

HOOPA 1A(RWY03)  
HOOPA 1B(RWY21)

RCMT SID  
MEDIT 2A(RWY03)  
MEDIT 2B(RWY21)

TAIPEI APP 121.0 122.3	BEIGAN TWR 118.65	ATIS 127.35	
Apt Elev: 41'	Trans Level: FL130	Trans Alt: 11,000'	
BEARINGS ARE MAGNETIC; DISTANCES ARE NAUTICAL MILES; ELEVATIONS, HEIGHTS IN FEET			



**HOOPA ONE ALFA DEPARTURE**  
Climb on track 033 until 600ft, then track NK 035BRG to GOOMY, then turn right to join NKN 8.0D arc to HOOPA to join W8.

**MEDIT TWO ALFA DEPARTURE**  
Climb on track 033 until 600ft, then track NK 035BRG to GOOMY, then turn right to join NKN 8.0D arc to MEDIT to join W2.

**HOOPA ONE BRAVO DEPARTURE**  
Climb on track 213 until 600ft, then turn left to track NK 129BRG to HOOPA to join W8.

**MEDIT TWO BRAVO DEPARTURE**  
Climb on track 213 until 600ft, then turn left to track NK 097BRG to MEDIT to join W2.

**NOTE**

- Takeoff minima  
HOOPA 1A /MEDIT 2A:  
VIS 1,600M, CEIL 500ft.  
HOOPA 1B /MEDIT 2B:  
VIS 1,600M.
- HOOPA 1A /MEDIT 2A:  
requires a minimum climb  
gradient of 5.0%(305ft/NM)  
until 600ft.

CHANGES: NEW PAGE NUMBER